

Earth
Pro[™]
Solid

ASTEC

RT960 RIDE-ON TRENCHER



BREAKTHROUGH SOLUTIONS



RT960 RIDE-ON TRENCHER

The Astec line of walk-behind and ride-on utility trenchers, vibratory plows and horizontal directional drills, along with related parts and accessories, offers users a broad choice of underground construction solutions.

The forerunners of the Astec machines were developed by Charles Davis in 1959. Recognized as an industry leader, Davis trenchers were renowned for their innovative designs and rugged reliability. The line was purchased by Case in 1969, and the machines carried the Case-Davis label until the mid 1970s when the Davis name was dropped. Case nurtured the line until 2002 when it was sold to Astec Underground and the machines received the Astec brand.

Astec Underground continues to enhance the line's reputation for performance and durability. Mainstay models like the Maxi-Sneaker and TF300B still have a respected place in the Astec lineup. Innovative walk-behind trenchers like the RT130 and RT160 are quickly joining them. These newly engineered units pay homage to the Astec heritage while confidently demonstrating the company's vision for the future.

Astec products are manufactured at the company's 360,000 square-foot facility in Loudon, Tenn., alongside the company's Trencher line of rock trenchers, surface miners, road miners, and related equipment. Astec has owned the Trencher brand since 1988. The combination of these respected names provides customers with unsurpassed choices to meet their trenching needs.

Astec products are sold and supported through a worldwide network of 47 dealers that operate more than 94 locations. These dealers sell new and used Astec machines, and provide the parts and service to help customers minimize downtime and get needed repair parts.

Visit www.astecunderground.com to learn about the full line of Astec Underground products or to contact the company for more information.

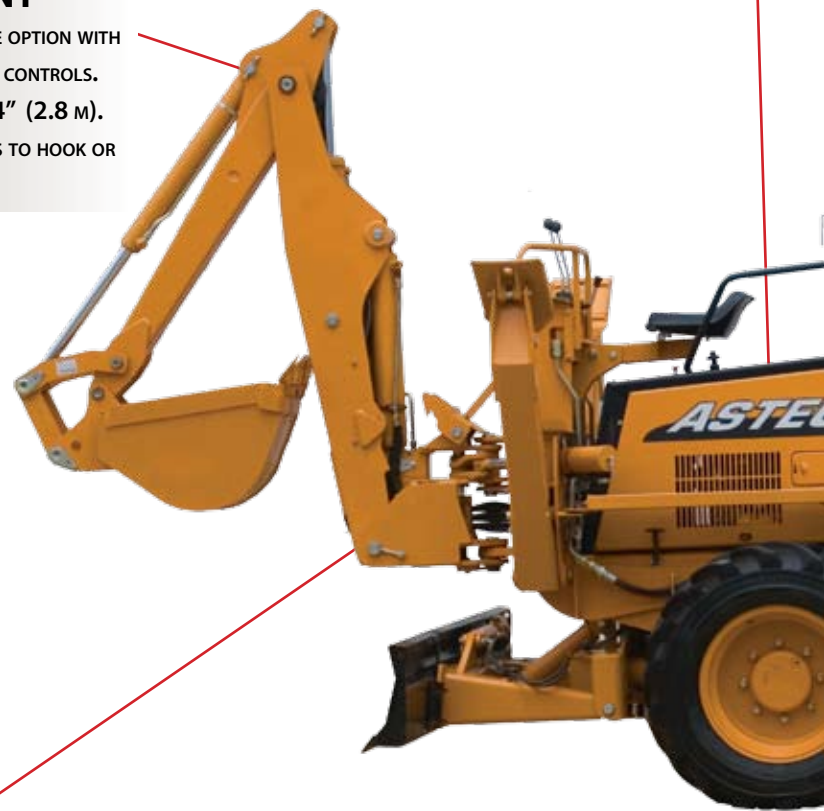


BACKHOE ATTACHMENT

EASY-TO-USE BACKHOE OPTION WITH 2-LEVER WOBBLE STICK CONTROLS. DIGS TO DEPTH OF 9' 4" (2.8 M). NO TRANSPORT CHAINS TO HOOK OR REMOVE.

POWERFUL STUFF

THE RT960'S 99-HORSEPOWER 4-CYLINDER TURBO-CHARGED 239 CID DIESEL CUMMINS 4T-390 ENGINE IS BOTH FUEL EFFICIENT AND POWERFUL FOR THE TOUGHEST JOBS.



CABLE MANAGEMENT

REEL CARRIER WHICH ACCEPTS REELS UP TO 2,500 LBS WITH A 56" MAXIMUM WIDTH IS AVAILABLE AS AN OPTION.





HANDLE THE SITUATION

CONTROL IS AT THE OPERATOR'S FINGERTIPS WITH THE RT960'S ERGONOMIC OPERATORS PLATFORM.



INSTALLATION MADE EASY

THE TOOL CARRIER CHASSIS DESIGN ALLOWS FLEXIBILITY ON THE JOB SITE. MACHINES CAN BE CONFIGURED WITH TRENCHER, VIBRATORY PLOW, BACKFILL BLADE, AND BACKHOE ATTACHMENTS.

CABLE PLOW

P95 VIBRATORY CABLE PLOW IS CAPABLE OF INSTALLATIONS 36 INCHES (914 MM) DEEP WITH MINIMAL GROUND INTERFERENCE. FLOAT FEATURE IN LIFT ALLOWS PLOW TO FOLLOW GROUND CONTOURS.



DUAL HYDROSTATIC SYSTEM

EFFICIENT HYDROSTATIC TRANSMISSION ALLOWS FOR INSTANT DIRECTIONAL CHANGES FORWARD TO REVERSE.

MAXIMUM TRACTION

4-WHEEL DRIVE IS STANDARD. CRAB STEERING IS USEFUL ON SLOPES WHEN COUNTERING TRACTIVE EFFORT.



BREAKTHROUGH SOLUTIONS

RT960 RIDE-ON TRENCHER

ENGINE

- 4T390 Cummins - 4 cylinder, 4-stroke, turbocharged diesel
- Bore/Stroke... 4.02"x4.72"(102x120 mm) ● Air intake..... Cross-flow
- Displacement..... 239 in3 (3.9 L) ● Direct fuel injection & liquid cooling
- Horsepower**
- Gross..... 99 (74 kW) @ 2200 rpm ● Net..... 91(68 kW) @ 2200 rpm
- Maximum torque**
- Gross 298 lb-ft (404 N-m) @ 1500 rpm

SERVICE CAPACITIES

- Fuel tank.....25 gal (95 L) ● Cooling system.. 18.2 qt (17.2 L)
- Engine with oil filter 11.6 qt (11 L) ● Hydraulic reservoir 20 gal (75.7 L)
- Total hydraulic..... 22 gal (83.3 L) ● Transmission.....9 qt (8.5 L)
- Axle center (each) 9.5 qt (9 L) ● Planetaries (each)1.1 qt (1 L)
- Trencher planetary drive-1.5 qt (1.4 L) ● Hydra-Borer® System-1.0 qt (0.9 L)

TIRES

- 38 x 18.00-20, 10 PR ● 38 x 18.00-20, 12 PR (heavy-duty)

POWERTRAIN

- Transmission 4-speed Hydra-shift with constant gear mesh
- DriveHydrostatic 4WD variable displacement axial-piston pump 0 – 46.5 gpm (0-176 L/min)
- Service brakes.....Hydrostatic ● Axle ratio..... 19.2:1
- Planetaries6:1 – Outboard ● Differentials....Electrically actuated
- Steering..... 2W, 4W and crab ● Axle oscillation20°

Travel speeds

- 1st 1.4 mph (2.2 km/h) ● 2nd..... 2.9 mph (4.7 km/h)
 - 3rd..... 5.0 mph (8.1 km/h) ● 4th..... 10.5 mph (16.8 km/h)
- NOTE: Rated speeds in forward and reverse.

ELECTRICAL SYSTEM

- Voltage. 12 volts, negative ground ● Alternator 65 amp
- Starter..... 3.35 hp (2.5 kW) ● Battery 685 CCA@ 0°F (-17.7° C)

OPERATOR / ENVIRONMENT

- ROPS & Key start ● Left and right entry/exit
- Unobstructed operator platform ● Swivel seat w/seat belt
- Hand and foot controls ● Iso-mounted platform

INSTRUMENTATION

- Engine coolant temperature gauge
- Hydraulic oil temperature gauge ● Alternator light
- Fuel level indicator ● Voltage meter
- Engine oil pressure indicator ● Tachometer/hourmeter
- Hydraulic charge filter indicator ● Hydraulic filter indicator
- Air filter restriction indicator ● Neutral indicator

DIMENSIONS

- F. Overall height – prime mover (to top of muffler)..... 115.7" (2.93 m)
- Overall length – prime mover 128.3" (3.28 m)
- Overall transport length w/backhoe & trencher w/4'(1.22 m)boom.... 275.0" (6.98 m)
- Angle of approach – prime mover 58°

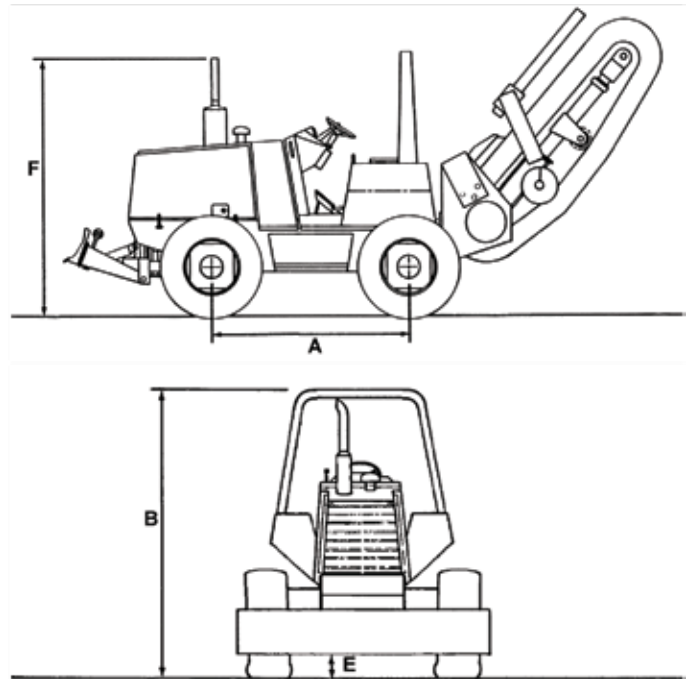
- Angle of departure – prime mover 60°
- Minimum ground clearance – (axle to ground) 12.4" (315 mm)
- Minimum ground clearance w/backfill blade 11.2" (284 mm)
- A. Wheelbase 76.8" (1.95 m)
- Height to centerline of trencher headshaft 29.8" (756 mm)
- Angle of departure with trencher attachment 34°
- Trencher boom angle down from horizontal 65°
- Trencher boom angle up from horizontal..... 50°
- Backhoe transport height 117.2" (2.97 m)
- Backfill blade height 16.1" (410 mm)
- Backfill blade lift height 19.1" (484 mm)
- Backfill blade depth of cut below grade..... 3.1" (78 mm)
- Transport height, plow frame base tractor 91.5" (2.32 m)
- Center of rear wheel to rear of plow w/chute in ground .. 114.1" (2.90 m)
- Plow swing angle 25°
- Plow offset from centerline 32" (813 mm)

Angle of departure base tractor/plow attachment raised:

- w/30" (762 mm) mounted blade 26°
- w/o mounted blade..... 30°

Plow blade tip ground clearance base tractor:

- w/30" (762 mm) mounted blade..... 28.4" (721 mm)
 - Overall width base tractor 85.8" (2.18 m)
 - Overall width w/optional tires 85.8" (2.18 m)
 - Tread width (centerlines) base tractor 68.1" (1.73 m)
 - Turning radius (outside) base tractor - 4-wheel steer .. Left – 129" (3.27 m)
 - Right – 129" (3.27 m)
 - Operating weight 12,700 lb (5760 kg)*
- *Operating weight of RT960 — Equipped with rear trencher, 4' (1.22m) 165K rock boom, 165K chain and standard teeth, backfill blade



IMPORTANT: Astec Underground reserves the right to change these specifications without notice and without incurring any obligation relating to such change. This literature has been published for world-wide circulation. Availability of some models and equipment builds vary according to the country in which the equipment is used. The illustrations and text may include optional equipment and accessories and may not include all standard equipment. Your Astec dealer/distributor will be able to give you details of the products and their specifications available in your area.

NOTE: All specifications are stated in accordance with SAE Standards or Recommended Practices, where applicable.

© 2007 ASTEC UNDERGROUND. All Rights Reserved. ASTEC_RT60_7_07

ASTEC UNDERGROUND an Astec Industries Company

9600 CORPORATE PARK DR • LOUDON, TN 37774 USA • 800.527.6020 FAX 865.458.8575 • astecunderground.com

