

Earth Pro<sup>™</sup>  
*Solid*

# ASTE<sup>C</sup>

**RT1200**  
RIDE-ON TRENCHER



Now Standard With

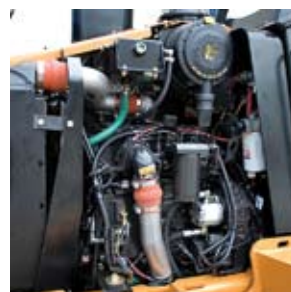
**ASTE<sup>C</sup>**  
**357** PROTECTION  
[WWW.ASTECUNDERGROUND.COM](http://WWW.ASTECUNDERGROUND.COM)

**BREAKTHROUGH SOLUTIONS**



## CUMMINS POWER

THE RT1200'S 121-HORSEPOWER (90.23 kW) 4-CYLINDER TURBO-CHARGED B4.5 (275 CID) DIESEL TIER 3 STAGE IIIA CUMMINS ENGINE IS BOTH FUEL EFFICIENT AND POWERFUL. PARTS & SERVICE FOR THIS POPULAR ENGINE ARE ACCESSIBLE WORLDWIDE.



## EASY ACCESS

ERGONOMIC CONTROLS ARE AT YOUR FINGERTIPS FROM THE EASY-ACCESS OPERATOR'S STATION. A FULL COMPLEMENT OF GAUGES KEEP YOU AWARE OF THE MACHINE'S PERFORMANCE.

## SERIOUS SECURITY

ALL NEW TRENCHER DESIGNS NOW COME STANDARD WITH OUR 357 PROTECTION PLAN. NEW MACHINES CARRY A 3-YEAR WARRANTY ON WORKMANSHIP AND A 5-YEAR WARRANTY ON THE ENGINE AT NO ADDITIONAL COST.\*

## BACKHOE ATTACHMENT

EASY-TO-USE BACKHOE OPTION WITH 2-LEVER WOBBLE STICK CONTROLS. DIGS TO DEPTH OF 9.3 FT. (2.83 M).

## DUAL HYDROSTATIC SYSTEM

HYDROSTATIC GROUND DRIVE AND HYDROSTATIC ATTACHMENT DRIVE PROVIDE OPTIMUM FOOTAGE FOR TRENCHING OR PLOWING.

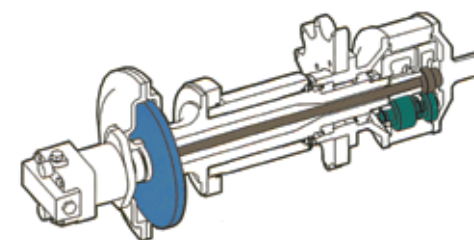
## HIGHLY MANEUVERABLE

FOUR-WHEEL STEERING MAKES THE RT1200 HIGHLY MANEUVERABLE. CRAB STEERING IS USEFUL ON SLOPES WHEN COUNTERING TRACTIVE EFFORT. OUTBOARD PLANETARIES AND DIFFERENTIAL LOCKS ARE STANDARD FEATURES.



## TRENCHING ADVANTAGE

TRENCHER FEATURES A FLYWHEEL, TORSION SHAFT, AND PLANETARY GEARBOX FOR SMOOTH OPERATION AND LONG LIFE. A FLYWHEEL MINIMIZES TRENCHER STALLS IN TOUGH DIGGING CONDITIONS AND REDUCES PRESSURE SPIKES. THE TORSION SHAFT ABSORBS SHOCK LOADS FROM THE DRIVELINE. PLANETARY GEARS MULTIPLY THE HYDROSTATIC MOTOR TORQUE TO PROVIDE EXCELLENT DIGGING POWER.



## MAXIMUM FLEXIBILITY

THE TOOL CARRIER CHASSIS DESIGN ALLOWS FLEXIBILITY ON THE JOB SITE. MACHINES CAN BE CONFIGURED WITH A VARIETY OF ATTACHMENTS INCLUDING TRENCHER, VIBRATORY PLOW, BACKFILL BLADE, BACKHOE, AND ROCK SAW.

## SPECIFICATIONS

### ENGINE

- Cummins QSB4.5 4-cylinder, Tier 3 Stage IIIA diesel engine
- Bore/stroke..... 4.19 x 5.0 in (106 x 127 mm)
- Displacement..... 275 C.I.D. (4.5 L)
- Direct fuel injection & liquid cooling
- Air intake..... cross flow ● Two-stage air cleaner
- Anti-freeze -34° F (-37° C)

### Horsepower

- Gross.....121 (90 kW) @ 2,200 rpm ● Net.....117 (87 kW) @ 2,200 rpm

### Maximum torque

- Gross ..... 347 lb-ft (471 N·m) @ 1,500 rpm

### SERVICE CAPACITIES

- Fuel tank..... 48 gal (182 L) ● Cooling system.. 19.5 qt (18.5 L)
- Engine with oil filter 15.9 qt (15 L) ● Hydraulic reservoir .. 40 gal (150.2 L)
- Total hydraulic.....48 gal (181.7 L) ● Transmission..... 11.9 qt (11.3 L)
- Axle center (each) ..... 9.5 qt (9 L) ● Planetaries (each) .. 1.6 qt (1.5 L)
- Trencher planetary drive-1.5 qt (1.4 L)

### TIRES

- Standard — 38 x 18.00 x 20, 12 PR

### POWERTRAIN

- Transmission ..... 4-speed Hydra-shift with shift-on-the-go
- Drive ... Hydrostatic 4WD, diff-lock, differential and outboard planetaries on both front and rear axles. Axial piston pump — 0-48.5 gpm (0-187.3 L/min)
- Service brakes..... Hydrostatic
- Parking brake..... Spring applied/hydraulically released
- Axle ratio 20.14:1..... ● Axle oscillation ..... 20°
- Planetaries ..... 6:9 – Outboard ● Differentials..... Electrically actuated
- Steering..... 2W, 4W, crab, and coordinated

### Travel speeds

- 1st ..... 1.2 mph (2.0 km/h) ● 2nd..... 2.7 mph (4.3 km/h)
  - 3rd..... 4.7 mph (7.5 km/h) ● 4th..... 10.2 mph (16.4 km/h)
- NOTE: Rated speeds in forward and reverse.

### ELECTRICAL SYSTEM

- Voltage.. 12 volts, negative ground ● Alternator..... 65 amp
- Starter..... 6.43 hp (4.8 kW) ● Battery 685 CCA@ 0°F (-17.7° C)

### OPERATOR / ENVIRONMENT

- ROPS & Key start ● Left and right entry/exit
- Unobstructed operator platform ● Easy-ride, swivel seat w/seatbelt
- Hand and foot controls ● ISO-mounted platform

### INSTRUMENTATION

#### Gauges

- Engine coolant temperature gauge ● Fuel level
- Hydraulic oil temperature gauge ● Tachometer/hourmeter
- Voltmeter

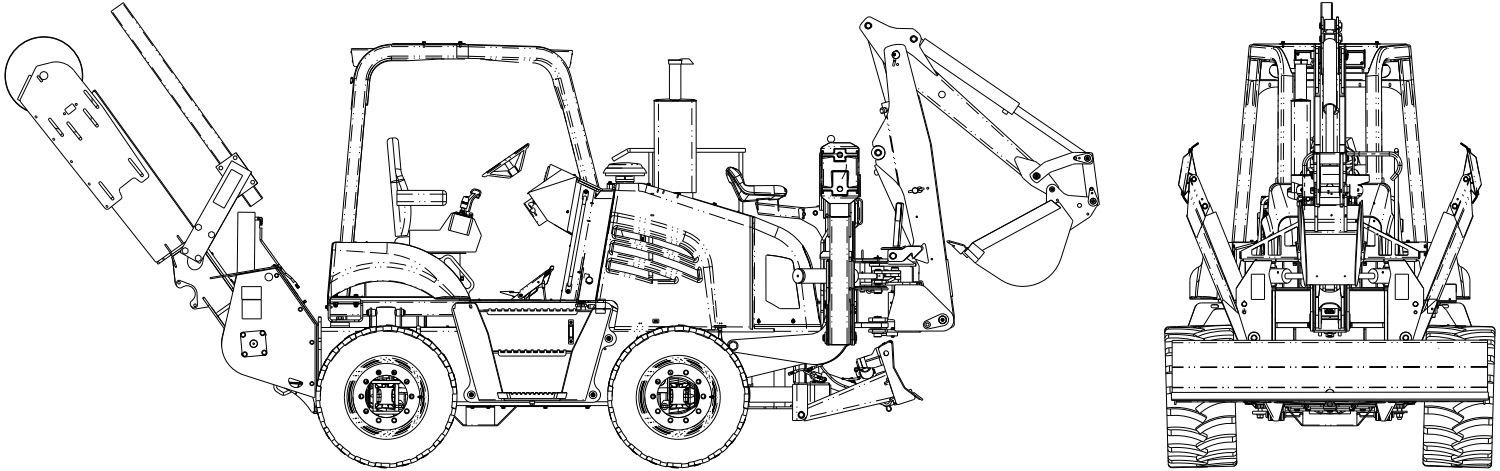
#### Warning Lights

- Air filter restrictor ● Alternator
- Engine oil pressure ● Hydraulic filter restriction
- Hydrostatic charge filter restriction ● Hydrostatic charge PSI
- Parking brake

Continued on back page

\* Some restrictions apply. See dealer for details.

# RT1200 RIDE-ON TRENCHER



## SPECIFICATIONS

Continued from inside

### OTHER STANDARD FEATURES

- Full coverage engine side panels
- Single lever blade control
- Hydraulics for front/rear attachments
- Electrical accessories power kit
- Four-post ROPS and FOPS
- Backfill blade ..... 6-way, 83.1-in. (2.10 m)

### OPTIONAL EQUIPMENT

- Trencher drive, heavy duty ..... Centerline or offset, flywheel/torsion shaft drive system, hydrostatic planetary drive
- Dual spoil augers ..... 14-in. (355.6 mm) diameter
- Backhoe — 762 ..... Over-center design, stabilizer lock-outs, remote backhoe controls
- Maximum digging depth ..... 9.3 ft. (2.83 m)
- Dig force, bucket ..... 7,179 lbs. (31,934 N)
- Dig force, dipper ..... 4,180 lbs. (5,667.3 N)
- Cable Plow — P95 ..... Steerable, offset
- Reel carrier ..... 3,780 lb. (1,714.58 kg) capacity
- Rock saw ..... 36, 40, or 46 in (914.4, 1.016, or 1,168.4 mm)
- Hydra-borer & accessories
- Rubber tracks
- Auxiliary hydraulics
- Quad attachment
- Tilt frame

### DIMENSIONS

- Overall height – prime mover (to top of muffler) ..... 111.7 in (2.84 m)
- Overall length – prime mover ..... 135.3 in (3.44 m)
- Overall transport length w/backhoe & trencher w/4 ft (1.22 m) boom ..... 275 in (6.98 m)
- Angle of approach – prime mover w/ blade ..... 15°
- Angle of departure – prime mover ..... 60°
- Minimum ground clearance – (axle to ground) ..... 12.4 in (315 mm)

- Minimum ground clearance w/backfill blade ..... 11.2 in (284 mm)
- Wheelbase ..... 76.8 in (1.95 m)
- Height to centerline of trencher headshaft ..... 35.5 in (901.7 mm)
- Angle of departure with trencher attachment ..... 34°
- Trencher boom angle down from horizontal ..... 65°
- Trencher boom angle up from horizontal ..... 50°
- Backhoe transport height ..... 117.2 in (2.98 m)
- Backfill blade height ..... 18 in (457.2 mm)
- Backfill blade lift height ..... 16.5 in (419.1 mm)
- Backfill blade depth of cut below grade ..... 3.1 in (78 mm)
- Transport height, plow frame base tractor ..... 91.5" (2.32 m)
- Center of rear wheel to rear of plow w/chute in ground.. 114.1 in (2.90 m)
- Plow swing angle ..... 26°
- Plow offset from centerline ..... 32 in (813 mm)
- Maximum trencher dig depth ..... 84 in (2.13 m)
- Digging width ..... 7 to 18 in (177.8 to 457.2 mm)

### Angle of departure base tractor/plow attachment raised:

- w/30" (762 mm) mounted blade ..... 26°
- w/o mounted blade ..... 30°

### Plow blade tip ground clearance base tractor:

- w/30" (762 mm) mounted blade ..... 28.4 in (721 mm)
- Overall width base tractor ..... 85.8 in (2.18 m)
- Tread width (centerlines) base tractor ..... 68.1 in (1.73 m)
- Turning radius (outside) base tractor - 4-wheel steer ..... Left – 129 in (3.27 m)
- Right – 129 in (3.27 m)
- Operating weight ..... 14,000 lb (6,350.29 kg)\*

\*Operating weight of RT1200 — Equipped with heavy-duty trencher, 4-ft (1.22-m) rock boom, 165K chain and standard teeth, backfill blade, 762 backhoe with 18-in (457 mm) bucket, 5 gal fuel, and no operator.

IMPORTANT: Astec Underground reserves the right to change these specifications without notice and without incurring any obligation relating to such change. This literature has been published for world-wide circulation. Availability of some models and equipment builds vary according to the country in which the equipment is used. The illustrations and text may include optional equipment and accessories and may not include all standard equipment. Your Astec dealer/distributor will be able to give you details of the products and their specifications available in your area.

NOTE: All specifications are stated in accordance with SAE Standards or Recommended Practices, where applicable.

© 2009 ASTEC UNDERGROUND. All Rights Reserved. ASTEC\_RT1200\_9\_09\_rev. 4\_10

