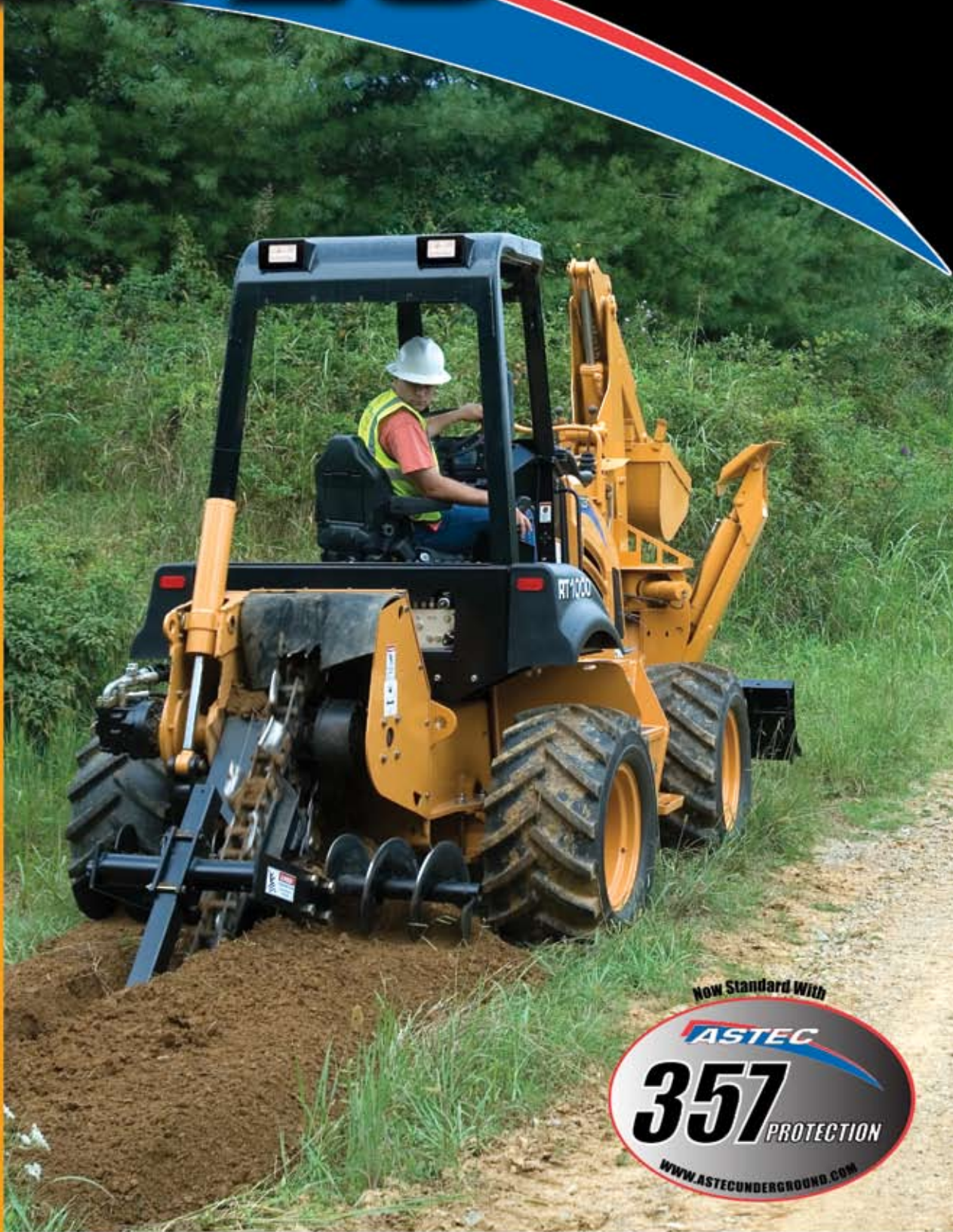


Earth
Pro[™]
Solid

RT1000
RIDE-ON TRENCHER

ASTE^C



BREAKTHROUGH SOLUTIONS



CUMMINS POWER

THE RT1000'S 99-HORSEPOWER (74kW) 4-CYLINDER TURBO-CHARGED B3.3 (199 CID) TIER 3 STAGE IIIA DIESEL CUMMINS ENGINE IS BOTH FUEL EFFICIENT AND POWERFUL. PARTS & SERVICE FOR THIS POPULAR ENGINE ARE ACCESSIBLE WORLDWIDE.



EASY ACCESS

ERGONOMIC CONTROLS ARE AT YOUR FINGERTIPS FROM THE EASY-ACCESS OPERATOR'S STATION. A FULL COMPLEMENT OF GAUGES KEEP YOU AWARE OF THE MACHINE'S PERFORMANCE.

SERIOUS SECURITY

ALL NEW TRENCHER DESIGNS NOW COME STANDARD WITH OUR 357 PROTECTION PLAN. NEW MACHINES CARRY A 3-YEAR WARRANTY ON WORKMANSHIP AND A 5-YEAR WARRANTY ON THE ENGINE AT NO ADDITIONAL COST.*

SPECIFICATIONS

ENGINE

- Cummins QSB3.3 4-cylinder, Tier 3 Stage IIIA diesel engine
- Bore/stroke..... 4.19 x 5.0 in (106 x 127 mm)
- Displacement..... 199 C.I.D. (3.3 L)
- Direct fuel injection & liquid cooling
- Air intake..... cross flow
- Two-stage air cleaner
- Anti-freeze -34° F (-37° C)

Horsepower

- Gross..... 99 (74 kW) @ 2,200 rpm
- Net..... 93 (69 kW) @ 2,200 rpm
- Maximum torque
- Gross 306 lb-ft (415 N·m) @ 1600 rpm

SERVICE CAPACITIES

- Fuel tank.....48 gal (181.7 L)
- Cooling system.. 18.2 qt (17.2 L)
- Engine with oil filter 11.6 qt (11 L)
- Hydraulic reservoir .. 40 gal (189.3 L)
- Total hydraulic.....42 gal (159.0 L)
- Transmission..... 11.9 qt (11.3 L)
- Axle center (each) 9.5 qt (9 L)
- Planetaries (each)2.2 qt (2 L)
- Trencher planetary drive-1.5 qt (1.4 L)
- Hydra-Borer® System-1.0 qt (0.9 L)

TIRES

- Standard — 38 x 18.00 x 20, 12 PR

POWERTRAIN

- Transmission 4-F-4R Hydrostatic with shift on the go
- Drive ... Hydrostatic 4WD, diff-lock, differential and outboard planetaries on both front and rear axles.
- Service brakes..... Hydrostatic
- Parking brake..... Spring applied/hydraulically released
- Axle ratio.....19.2:1
- Axle oscillation20°
- Planetaries6:1 – Outboard
- Differentials.....Electrically actuated
- Steering..... 2W, 4W, crab, coordinated

Travel speeds

- 1st 1.4 mph (2.2 km/h)
 - 2nd..... 2.9 mph (4.7 km/h)
 - 3rd..... 5.0 mph (8.1 km/h)
 - 4th.....10.5 mph (16.8 km/h)
- NOTE: Rated speeds in forward and reverse.

ELECTRICAL SYSTEM

- Voltage. 12 volts, negative ground
- Alternator 60 amp
- Starter..... 2.95 hp (2.2 kW)
- Battery 685 CCA@ 0°F (-17.7° C)

OPERATOR / ENVIRONMENT

- ROPS & Key start
- Unobstructed operator platform
- Hand and foot controls
- Left and right entry/exit
- Easy-ride, swivel seat w/seatbelt
- ISO-mounted platform

INSTRUMENTATION

Gauges

- Engine coolant temperature gauge
- Hydraulic oil temperature gauge
- Voltmeter
- Fuel level
- Tachometer/hourmeter

Warning Lights

- Air filter restrictor
- Engine oil pressure
- Hydrostatic charge filter restriction
- Parking brake
- Alternator
- Hydraulic filter restriction
- Hydrostatic charge PSI

Continued on back page



BACKHOE ATTACHMENT

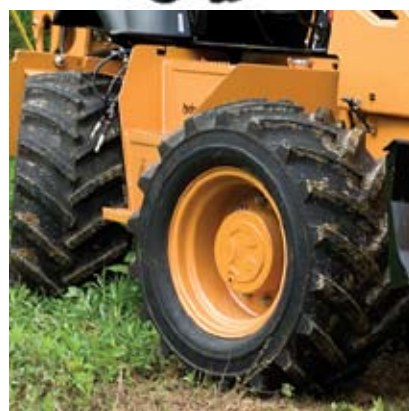
EASY-TO-USE BACKHOE OPTION WITH 2-LEVER WOBBLE STICK CONTROLS. DIGS TO DEPTH OF 9.3 FT. (2.83 M).

DUAL HYDROSTATIC SYSTEM

HYDROSTATIC GROUND DRIVE AND HYDRO-STATIC ATTACHMENT DRIVE PROVIDE OPTIMUM FOOTAGE FOR TRENCHING OR PLOWING.

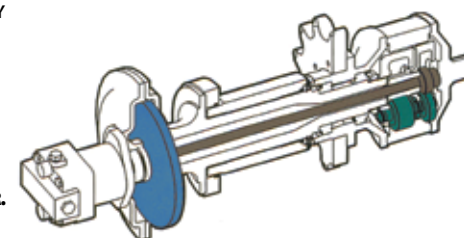
HIGHLY MANEUVERABLE

FOUR-WHEEL STEERING MAKES THE RT1000 HIGHLY MANEUVERABLE. CRAB STEERING IS USEFUL ON SLOPES WHEN COUNTERING TRACTIVE EFFORT. OUTBOARD PLANETARIES AND DIFFERENTIAL LOCKS ARE STANDARD FEATURES.



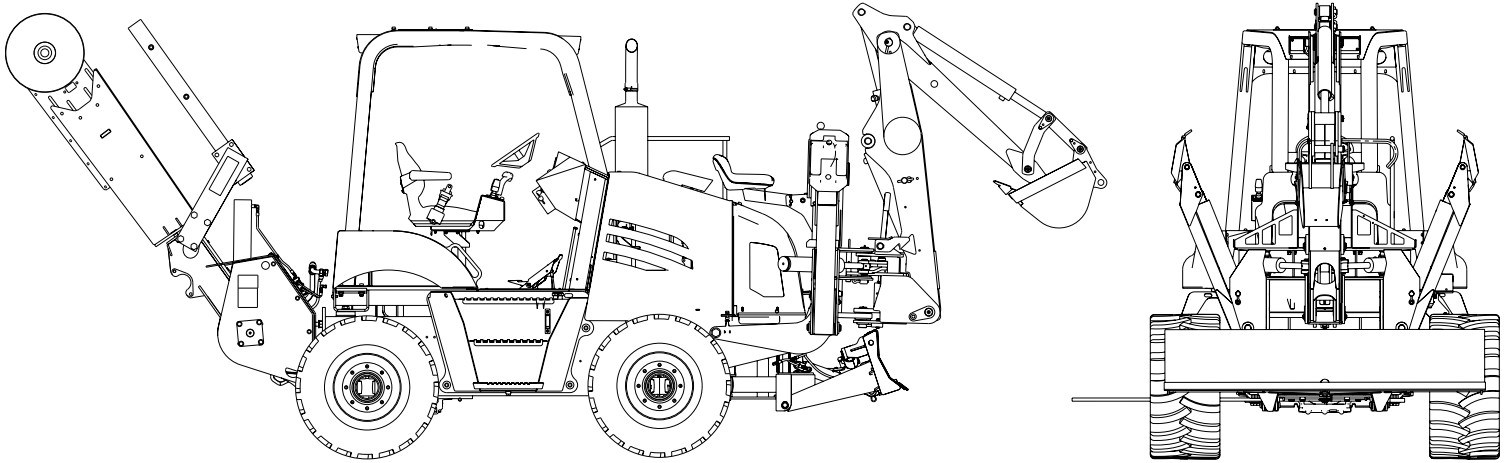
TRENCHING ADVANTAGE

TRENCHER FEATURES A FLYWHEEL, TORSION SHAFT, AND PLANETARY GEARBOX FOR SMOOTH OPERATION AND LONG LIFE. A FLYWHEEL MINIMIZES TRENCHER STALLS IN TOUGH DIGGING CONDITIONS AND REDUCES PRESSURE SPIKES. THE TORSION SHAFT ABSORBS SHOCK LOADS FROM THE DRIVELINE. PLANETARY GEARS MULTIPLY THE HYDROSTATIC MOTOR TORQUE TO PROVIDE EXCELLENT DIGGING POWER.



*Some restrictions apply. See dealer for details.

RT1000 RIDE-ON TRENCHER



SPECIFICATIONS

Continued from inside

OTHER STANDARD FEATURES

- Full coverage engine side panels
- Single lever blade control
- Hydraulics for front/rear attachments
- Four-post ROPS and FOPS
- Electrical accessories power kit
- Backfill blade6-way, 83.1-in. (2.10 m)

OPTIONAL EQUIPMENT

- Trencher drive, heavy duty Centerline or offset, flywheel/torsion shaft drive system, hydrostatic planetary drive
- Dual spoil augers..... 14-in. (355.6 mm) diameter
- Backhoe — 762..... Over-center design, stabilizer lock-outs, remote backhoe controls
- Maximum digging depth 9.3 ft. (2.83 m)
- Dig force, bucket 7,179 lbs. (31,934 N)
- Dig force, dipper 4,180 lbs. (5,667.3 N)
- Cable Plow — P95..... Steerable, offset
- Reel carrier..... 3,780 lb. (1,714.58 kg) capacity
- Rock saw..... 36 or 40 in (914.4 or 1,016 mm)
- Hydra-borer & accessories
- Rubber tracks
- Quad attachment
- Auxiliary hydraulics

DIMENSIONS

- Overall height – prime mover (to top of ROPS)..... 110.5 in (2.81 m)
- Overall length – prime mover w/ backfill blade..... 157.7 in (4.01 m)
- Overall transport length w/backhoe & trencher w/4 ft (1.22 m)boom..... 284 in (7.21 m)
- Angle of approach – prime mover w/ blade 16°
- Angle of departure – prime mover 60°
- Minimum ground clearance – (axle to ground) 14.3 in (363.22 mm)

- Minimum ground clearance w/backfill blade 13 in (330.2 mm)
- Wheelbase 75.6 in (1.92 m)
- Height to centerline of trencher headshaft..... 33 in (838.2 mm)
- Angle of departure with trencher attachment 42°
- Trencher boom angle down from horizontal 65°
- Trencher boom angle up from horizontal..... 50°
- Backhoe transport height 118 in (3.00 m)
- Backfill blade height 18 in (457.2 mm)
- Backfill blade lift height 16.5 in (419.1 mm)
- Backfill blade depth of cut below grade..... 3.1 in (78 mm)
- Transport height, plow frame base tractor 91.5" (2.32 m)
- Center of rear wheel to rear of plow w/chute in ground.. 114.1 in (2.90 m)
- Plow swing angle 25°
- Plow offset from centerline 32 in (813 mm)
- Maximum trencher dig depth 84 in (2.13 m)
- Digging width..... 7 to 18 in (177.8 to 457.2 mm)

Angle of departure base tractor/plow attachment raised:

- w/30 in (762 mm) mounted blade 26°
- w/o mounted blade..... 27°

Plow blade tip ground clearance base tractor:

- w/30 in (762 mm) mounted blade 28.4 in (721 mm)
- Overall width base tractor 85.8 in (2.18 m)
- Tread width (centerlines) base tractor 68.1 in (1.73 m)
- Turning radius (outside) base tractor - 4-wheel steer Left – 129 in (3.27 m)
- Right – 129 in (3.27 m)
- Operating weight 13,500 lb (6,350.29 kg)*

*Operating weight of RT1000 — Equipped with heavy-duty trencher, 4-ft (1.22-m) rock boom, 165K chain and standard teeth, backfill blade, 762 backhoe with 18-in (457 mm) bucket, 5 gal fuel, and no operator.

IMPORTANT: Astec Underground reserves the right to change these specifications without notice and without incurring any obligation relating to such change. This literature has been published for world-wide circulation. Availability of some models and equipment builds vary according to the country in which the equipment is used. The illustrations and text may include optional equipment and accessories and may not include all standard equipment. Your Astec dealer/distributor will be able to give you details of the products and their specifications available in your area.

NOTE: All specifications are stated in accordance with SAE Standards or Recommended Practices, where applicable.

© 2009 ASTEC UNDERGROUND. All Rights Reserved. ASTEC_RT1000_9_09_rev_4_10

